

Jody Allen Crowe



HEALTHY BRAINS FOR CHILDREN

“PREVENTING PRENATAL EXPOSURE TO ALCOHOL”



Every drink a pregnant woman has in her hand has the potential to take potential from the unborn.



STAGES

Stage 0
No prenatal
exposure to
alcohol

Stage 0—No alcohol exposure during the entire pregnancy.

Stage 1—Prenatal exposure to alcohol that is not observable.

Stage 2—Prenatal exposure to alcohol through low levels of alcohol consumption and behaviors.

Stage 3—Prenatal exposure to alcohol resulting in observable loss of potential and social behaviors at levels that may include interrupted school experiences, criminal behaviors, early promiscuity, early entrance into drug and alcohol use, psychological diagnoses without observable physical deformities of prenatal exposure to alcohol.

Stage 4—Prenatal exposure to alcohol resulting in Stage 3 behaviors and observable physical manifestations of damage to the face, body, and organs.

Stage 5—Prenatal exposure to alcohol resulting in death, including miscarriage, stillborn, SIDS, and organ failure.

ST

Stage 1

Prenatal exposure to alcohol with loss of potential not observable with current tools

Stage 0—

Stage 1—Pre
obs

Stage 2—Pre
thro
beh

Stage 3—Pre
and
exp

into drug and alcohol use, psychological diagnoses without observable physical deformities of prenatal exposure to alcohol.

Stage 4—Prenatal exposure to alcohol resulting in Stage 3 behaviors and observable physical manifestations of damage to the face, body, and organs.

Stage 5—Prenatal exposure to alcohol resulting in death, including miscarriage, stillborn, SIDS, and organ failure.

STAGES OF PRENATAL EXPOSURE TO ALCOHOL

Stage 2

Prenatal exposure to alcohol resulting in detectible lowered academic, social and emotional intelligence.

Stage 0—No alcohol exposure during entire pregnancy.

Stage 1—Prenatal exposure to alcohol during pregnancy.

Stage 2—Prenatal exposure to alcohol through low risk drinking behaviors.

Stage 3—Prenatal exposure to alcohol and social learning experiences into drug and alcohol use, observable.

Stage 4—Prenatal exposure to alcohol, observable and organs.

Stage 5—Prenatal exposure to alcohol resulting in death, including miscarriage, stillborn, SIDS, and organ failure.

STAGES OF PRENATAL EXPOSURE TO ALCOHOL

Stage 3

Prenatal exposure to alcohol resulting in observable exhibitions of brain damage behaviors, which result in academic failure, interrupted school experience, psychological diagnoses, criminal behaviors, depression

Stage 4

Prenatal exposure to alcohol resulting in physical manifestation and observable exhibitions of Stage 3 academic and social brain damage behaviors

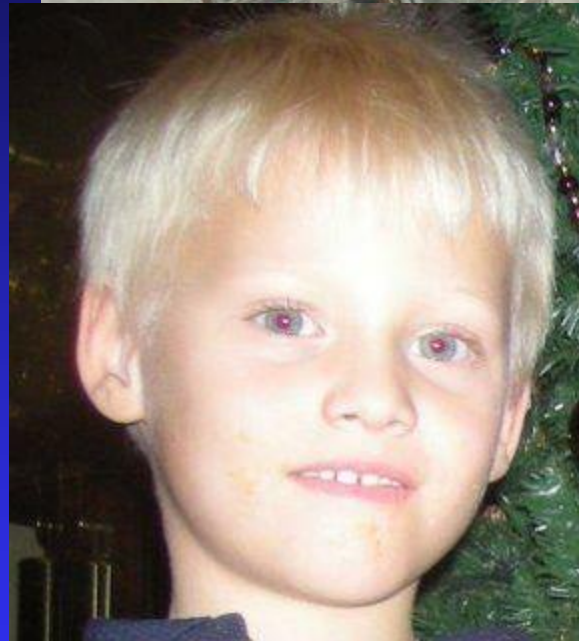
g and alcohol use, psychological diagnoses without
observable physical deformities of prenatal exposure to alcohol.

Stage 4—Prenatal exposure to alcohol resulting in Stage 3 behaviors and observable physical manifestations of damage to the face, body, and organs.

Stage 5—Prenatal exposure to alcohol resulting in death, including miscarriage, stillborn, SIDS, and organ failure.

Crowe 2010

www.healthybrainsforchildren.org



Pre
in
d



ulting
eath
om
.

...vise physical manifestations of damage to the face, body,
and organs.

Stage 5—Prenatal exposure to alcohol resulting in death, including miscarriage, stillborn, SIDS, and organ failure.

The Andegooz Study

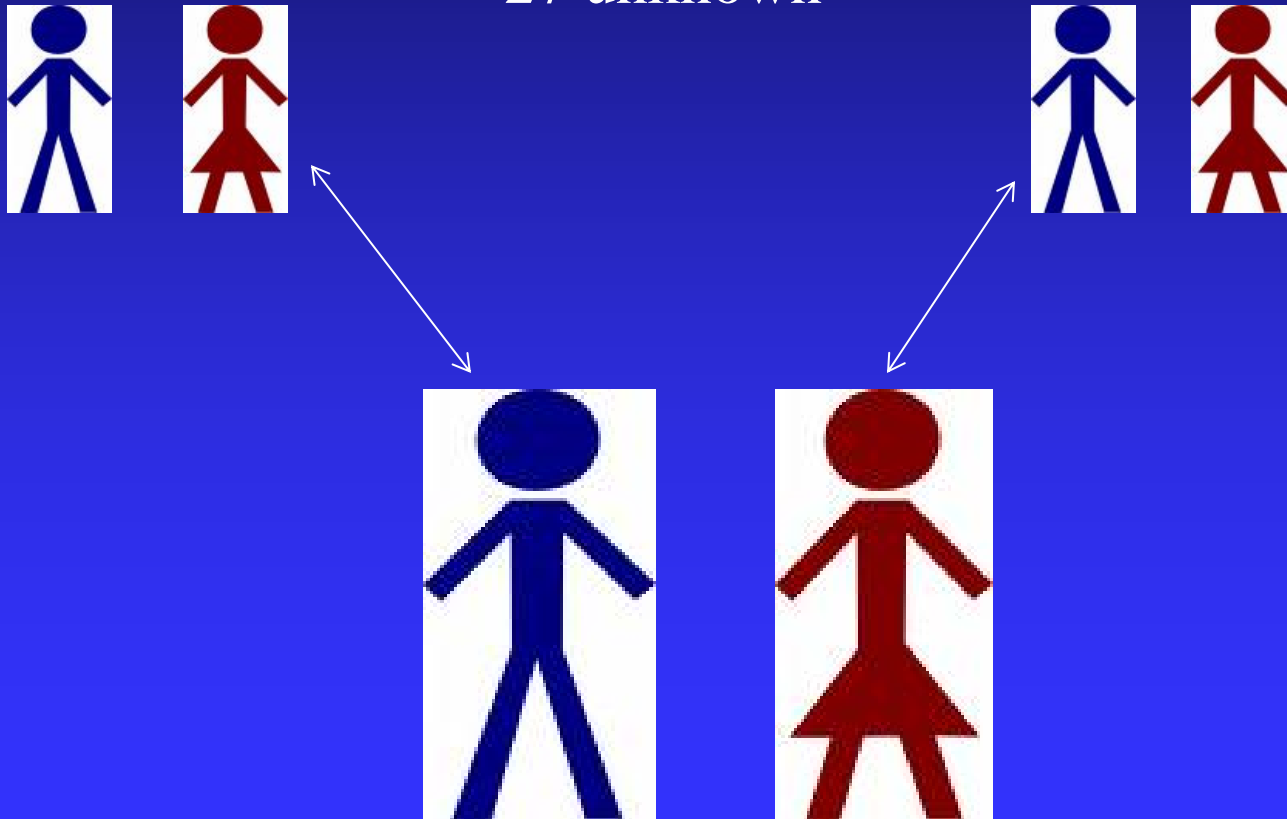
Study of the Family of Aandegooz

104 Total Family Members

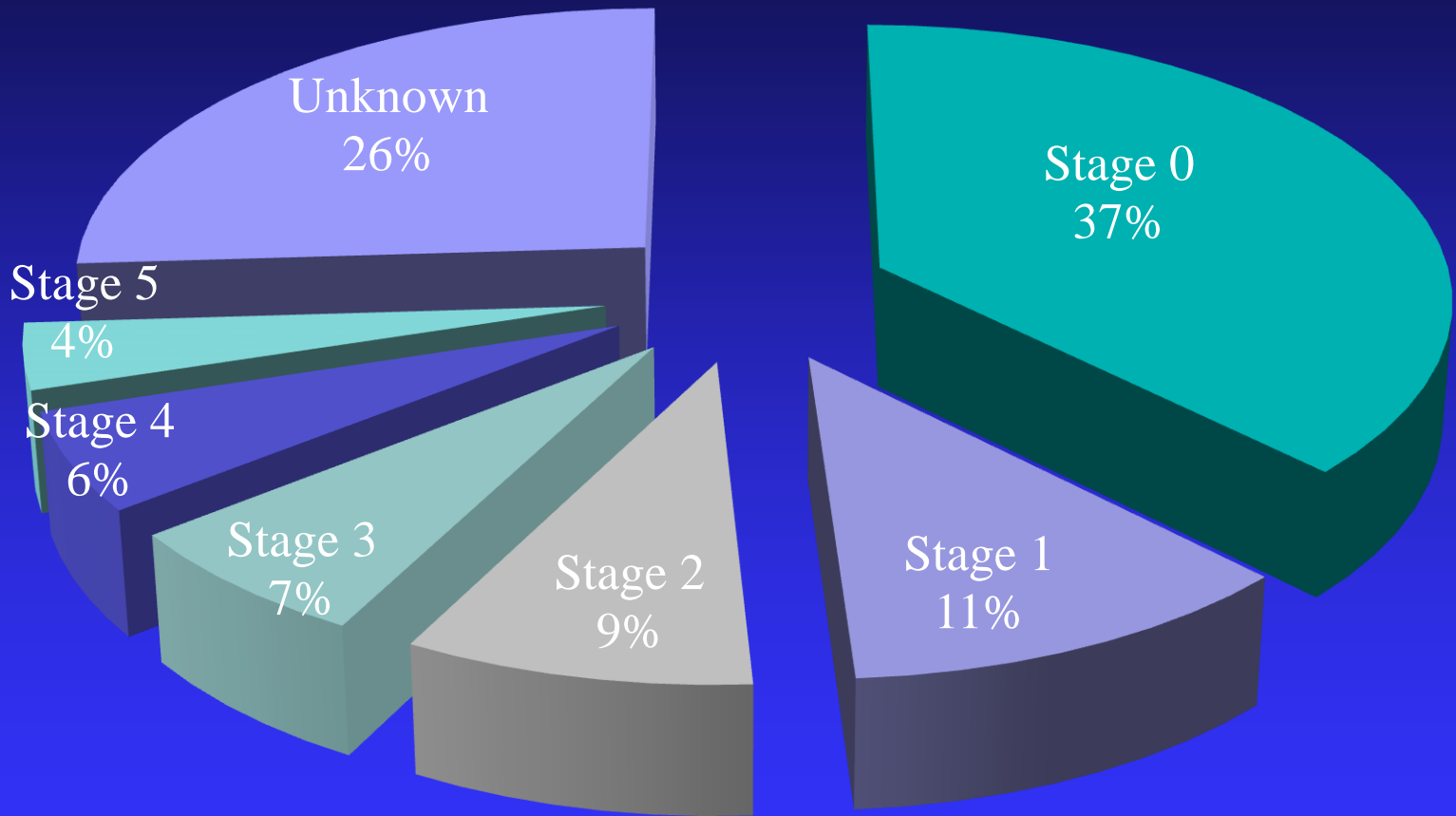
39 no prenatal exposure to alcohol

38 prenatal exposure to alcohol

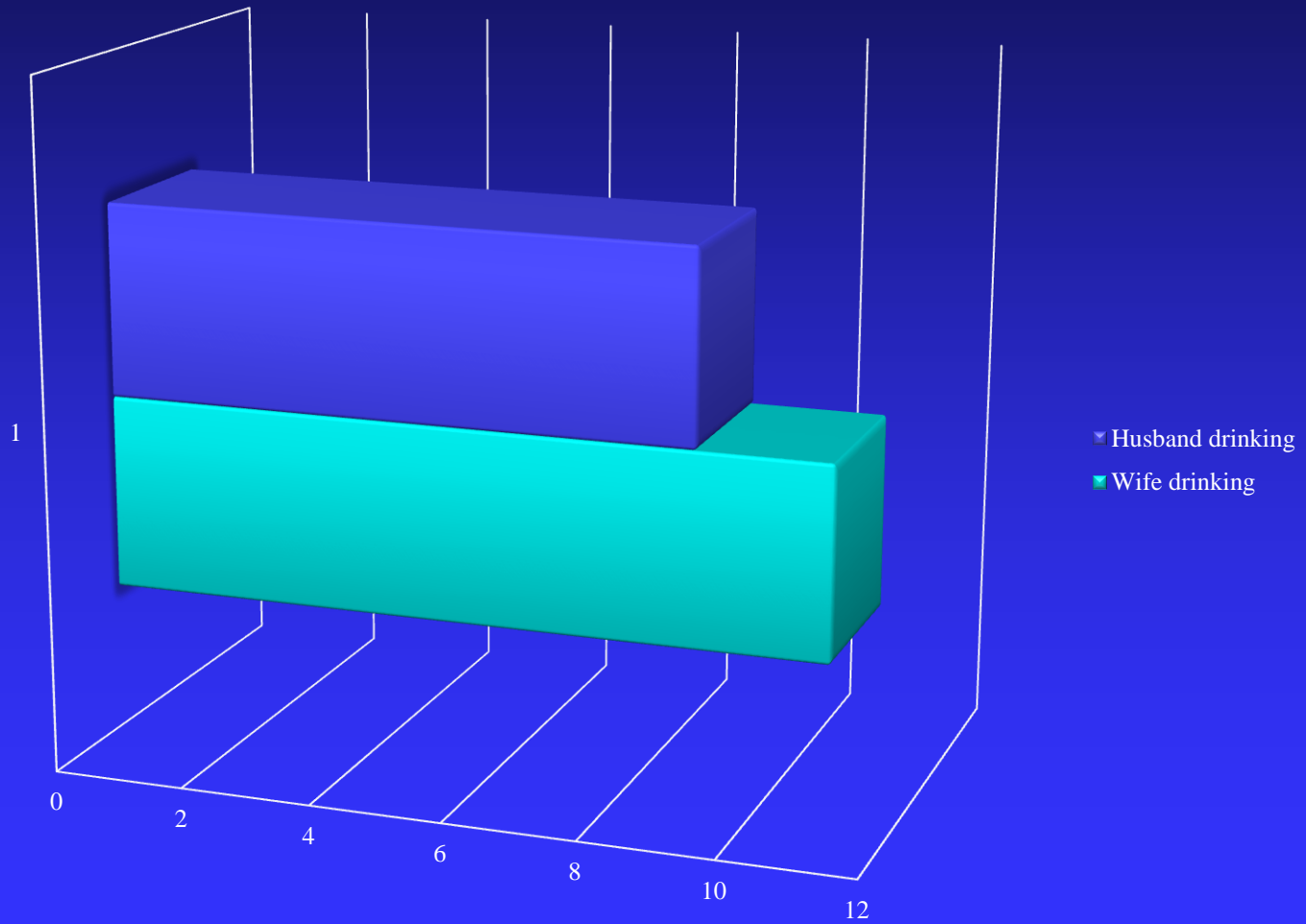
27 unknown



Both Sides of the Family



Partnership Drinking

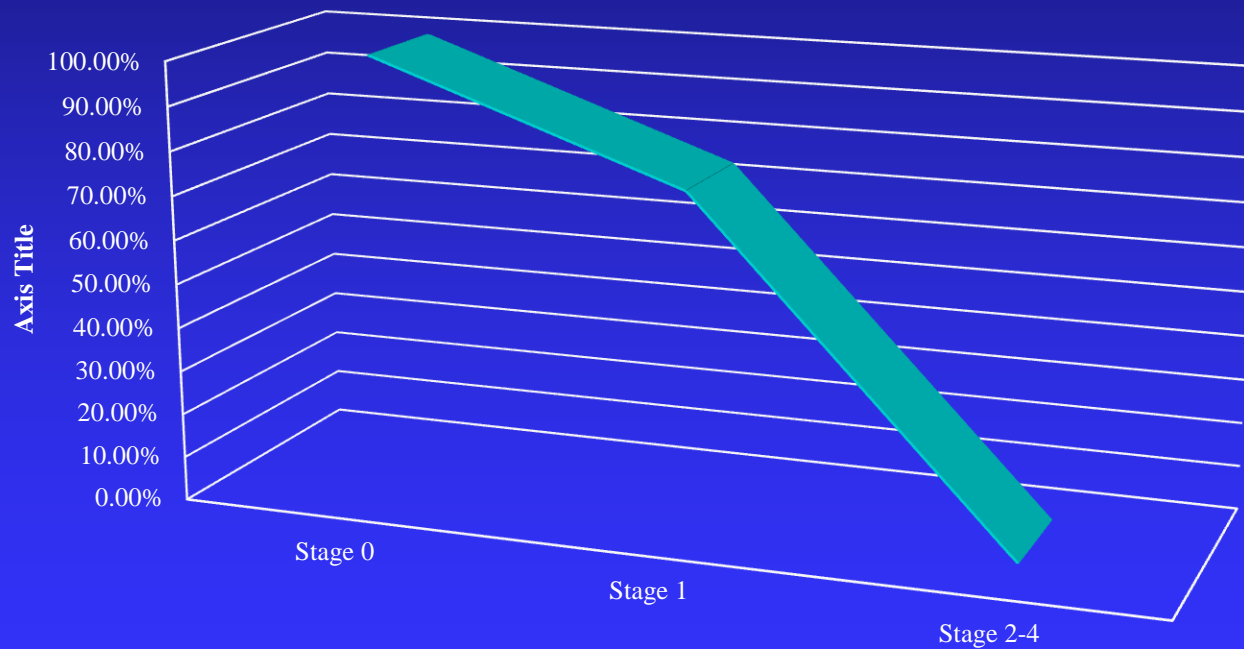




Partnership
drinking

College Success

Successful College by Children with Parents with College Degrees





In my professional opinion:

Not all prenatally exposed children,
adolescents, and adults are violent.

But.....

Most violent children,
adolescents, and adults have been
prenatally exposed to alcohol.

The Hidden Cost

- Crow Wing County Jail - December 2007
 - ◆ 94% of the inmates had mothers who drank alcohol
 - ◆ 5 interviews – 16 siblings, children, spouses prenatally exposed

AR PRAŽŪTINGAS RYŠYS YRA IR TAVO MOKYKLOJE?

Jody's Allenas Crowe (Džodis Alenas Krau) pristato dėmesį prikaustantį požiūrį į tyliai plintančią prenatalinio alkoholio vartojimo epidemiją ir nepaneigiamą jos ryšį su mokyklų žudikais šauliais. Jis pats 1966 m. buvo pradinės mokyklos moksleivis kai jo gimtojo miestelio aukštojoje mokykloje Davidas Blackas tapo pirmuoju mokyklų šauliu Jungtinių Amerikos Valstijų istorijoje. Prisiminimai apie šią dieną išliko gyvi visą autoriaus gyvenimą. 2005 m. Minesotoje įvykus Red Lake'o žudynėms, Crowe atpažino šio įvykio panašumus su jo gimtojo miestelio tragedija, įvykusia prieš 39 metus, ir pastebėjo sąsają, kurios niekas kitas nematė. Abu šiuos įvykius siejo prenatalinio alkoholio vartojimo žala šaulių smegenims. Knyga „Pražūtingas ryšys“ (The Fatal Link) supažindina su Jody's Allenas Crowe dvidešimties metų patirtimi su Vaisiaus alkoholinio spektro sutrikimais ir atskleidžia pražūtingą ryšį tarp mokyklų šaulių ir jų motinų alkoholio vartojimo įpročių.

Jody's Allenas Crowe eidamas mokytojo, direktoriaus, vykdomojo administratoriaus pareigas Jungtinių Amerikos Valstijų edukacijos sistemoje pradirbo 18 metų. Jo sukurtas vidurinės mokyklos modelis pelnė prezidento Clintono „Mėlynojo kaspino“ apdovanojimą. Jis sumodeliavo ir dviejuose skirtingų valstijų rezervatuose įgyvendino dvi ypač efektyvias ir intensyvas pagalbos programas mokiniams, turintiems emocinių ir elgsenos sutrikimų. Jody's Allenas Crowe yra pelno nesiekiančios labdaros organizacijos „Už sveikas vaikų smegenis“ (Healthy Brains for Children), siekiančios užkirsti kelią prenataliniam alkoholio poveikiui, steigėjas ir generalinis direktorius.

ISBN 978-609-443-017-6



9 786094 430176

PRAŽŪTINGAS RYŠYS

Jody Allen Crowe

PRAŽŪTINGAS RYŠYS

RYŠYS TARP PRENATALINIO ALKOHOLIO
VARTOJIMO SUKELTŲ SMEGENŲ SUTRIKIMŲ
IR MOKYKLŲ ŽUDIKŲ ŠAULIŲ

STOP STOP STOP STOP STOP

Jody Allen Crowe



The Fatal Link

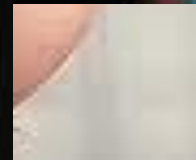


Irrefutable evidence of heavy prenatal exposure to alcohol in four out of five teenage male school shooters in Minnesota and Wisconsin.

88% of School Shooters across the nation fit the profile of Prenatal Exposure to Alcohol



**Who is at the
highest risk for
drinking while
pregnant in the
United States?**



Substance Abuse and Mental Health Services Administration (SAMHSA) 9/11/13

- 18 percent of women in their first trimester of pregnancy used alcohol within the past month
- 6.6 percent of women in their first trimester of pregnancy engaged in binge drinking
- 55% of women in childbearing years drank alcohol in the past month.

Study: Unplanned pregnancies common in women in their 20s

April 25, 2012 Live Science

73% of pregnancies in 20-23 yr old unmarried women unplanned



31% of births among married women unplanned





The New York Times



- Alaska initiative to eradicate FASD
- \$400,000 study of pregnancy test dispensers in women's restrooms in bars
- Goal to place in all alcohol establishments.



My Baby's Breath

- Mobile breathalyzer
 - ◆ Alcohol-involved pregnant teens
 - ◆ Monitored and incentivized
 - ◆ First-of-its kind prevention program

Thank you



HEALTHY BRAINS FOR CHILDREN

“PREVENTING PRENATAL EXPOSURE TO ALCOHOL”

www.healthybrainsforchildren.org